

Holiday Inn Rochester - Chatham



[View the Access Guide](#)

Maidstone Road, Chatham, Kent ME5 9SF

0871 942 9069

www.ihg.com/holidayinn/hotels/gb/en/rochester/rcske/hoteldetail (<https://www.ihg.com/holidayinn/hotels/gb/en/rochester/rcske/hoteldetail>)

Guide Last Updated: 26/01/2018

[Something changed? \(/contact/something_changed?destination=/access-guide/kew-green/holiday-inn-rochester-chatham\)](#)



(<https://maps.google.com/maps?ll=51.3486380,507376&z=14&t=m&hl=en-US&q=US&mapclient=apiv3>)

Map data ©2018 Google

Access Guide



[Explain these icons \(/our-icons\)](#)

[Expand all](#) [Collapse all](#)

Hotel Introduction

[Collapse -](#)

Related Access Guide(s)

[Collapse -](#)

- [For the Holiday Inn Rochester - Chatham - Conference Facilities DisabledGo access guide please click here \(new tab\) \(https://www.disabledgo.com/access-guide/holiday-inn/holiday-inn-rochester---chatham---conference-facilities\).](#)
- [For the Holiday Inn Rochester - Chatham - Leisure Facilities DisabledGo access guide please click here \(new tab\) \(https://www.disabledgo.com/access-guide/holiday-inn/holiday-inn-rochester---chatham---leisure-facilities\).](#)

Hotel Information

[Collapse -](#)

- The hotel has its own parking facilities.
- This hotel has its own restaurant located on the ground floor.
- Conference/meeting facilities are available.
- The conference/meeting facilities are located on the ground floor.

Room Information

[Collapse -](#)

- The hotel has 150 rooms in total.
- There is an/are accessible room(s) within the hotel.
- The accessible room(s) is/are located on the ground floor.
- The hotel has 2 accessible room(s) with accessible ensuite facilities.
- There is/are 2 accessible room(s) with a wet room/wheel in shower.
- There is an/are adjoining room(s) available for the accessible room(s).
- The accessible rooms are 56m - 50m from the hotel lobby internal entrance.
- There is a/are standard room(s) available on the ground floor.
- There is an/are adjoining room(s) available for the standard room(s).
- Rooms on other floors are accessed via stairs and lift.

Auxiliary Aids

Collapse -

- Vibrating pillows with flashing beacons are available on request.
- Bed raisers are not available on request.
- Bath mats are available on request.
- All televisions have subtitles available.

Getting Here

Collapse -

By Road

Collapse -

- This hotel is located on the outskirts of Rochester and Chatham, just off Junction 3 of the M2. The hotel is located on the A229.
- This hotel has a car park which is free for all users.

By Bus

Collapse -

- There is a bus stop within 150 metres of the hotel.
- The nearest bus stop is located outside the hotel on the A229, approximately 91m from the hotel.
- [For more information on buses in Kent and Surrey please click here \(opens new tab\) \(https://www.arrivabus.co.uk/kent-and-surrey\).](https://www.arrivabus.co.uk/kent-and-surrey)

By Train

Collapse -

- The nearest Railway Station is Chatham.
- Chatham Station is situated in the centre of Chatham, located approximately 3.5 miles from the hotel. There are bus and taxi routes to the hotel from the station.
- [For more information on National Rail please click here \(opens new tab\) \(http://www.nationalrail.co.uk/stations/ctm/details.html\).](http://www.nationalrail.co.uk/stations/ctm/details.html)

Getting Help and Assistance

Collapse -

- There is a member of staff available for help and assistance.
- Staff receive disability awareness/equality training.
- Staff do not receive deaf awareness training.
- There is not a member of staff trained in British Sign Language.
- British Sign Language interpreters cannot be provided on request.
- The alternative formats documents can be provided in include; large print on request.
- There is an assistance dog toilet or toileting area at the venue/near by.
- The assistance dog toilet or toileting area is located on the grass areas surrounding the hotel.
- Water bowls for assistance dogs are available.

- There are mobility aids available.
- The mobility aids available include wheelchairs.
- To obtain mobility aids please contact the hotel reception.

Parking (Hotel Car Park)

Collapse -

Parking

Collapse -

- The hotel does have its own parking facilities.
- The car park is located in front of the hotel.
- The car park type is open air/surface.
- The car park does not have a height restriction barrier.
- The car park does not have a barrier control system.
- The car park surface is tarmac.
- There is a/are Blue Badge parking bay(s) available.
- The Blue Badge bay(s) is/are signposted and have markings which are faded.
- There is/are 3 designated Blue Badge parking bay(s) within the car park.
- The dimensions of the designated Blue Badge parking bay(s) surveyed are 312cm x 495cm (10ft 3in x 16ft 3in).
- There is not a 120cm hatched zone around the Blue Badge parking bay(s).
- Parking spaces for Blue Badge holders do not need to be booked in advance.
- Clearly marked/signposted parent and child parking bays are not available.
- All parking spaces are provided on a first come first served basis.
- There is also an overflow car park for visitors.
- Additional car parking for guests is available at the front right of the hotel.

Paying

Collapse -

- There are not parking charges for the car park.

Access from the Car Park

Collapse -

- The route from the car park to the entrance is accessible to a wheelchair user with assistance.
- Assistance may be required because there is/are slopes/ramps.
- The entrance is not clearly visible from the car park.
- The route from the car park to the entrance is clearly signposted.
- The surface on the approach to the entrance is concrete tiles.
- There is not a road to cross between the car park and the entrance.
- There is no tactile paving on dropped kerbs between the car park and the entrance.
- The nearest designated Blue Badge parking bay is approximately 32m (34yd 2ft) from the Blue Badge car park entrance.

Drop-off Point(s)

Collapse -

- There is not a/are not clearly marked drop-off point(s).



1



2



3



4



5

Parking (Hotel and Leisure Facilities Car Park)

Collapse -

Parking

Collapse -

- The hotel does have its own parking facilities.
- The car park is located to the right of the hotel.
- The car park type is open air/surface.
- The car park does not have a height restriction barrier.
- The car park does not have a barrier control system.
- The car park surface is tarmac.
- There is a/are Blue Badge parking bay(s) available.
- The Blue Badge bay(s) markings are faded.
- There is/are 4 designated Blue Badge parking bay(s) within the car park.
- The dimensions of the designated Blue Badge parking bay(s) surveyed are 262cm x 585cm (8ft 7in x 19ft 2in).
- There is a 120cm hatched zone around the Blue Badge parking bay(s).
- Parking spaces for Blue Badge holders do not need to be booked in advance.
- Clearly marked/signposted parent and child parking bays are not available.
- All parking spaces are provided on a first come first served basis.

Paying

Collapse -

- There are not parking charges for the car park.

Access from the Car Park

Collapse -

- The route from the car park to the entrance is accessible to a wheelchair user with assistance.
- Assistance may be required because there is/are slopes/ramps.
- The entrance is not clearly visible from the car park.
- The route from the car park to the entrance is clearly signposted.
- The surface on the approach to the entrance is block paving.
- There is not a road to cross between the car park and the entrance.
- There is tactile paving on dropped kerbs between the car park and the entrance.
- The nearest designated Blue Badge parking bay is approximately 32m (34yd 2ft) from the hotel main entrance.

Drop-off Point(s)

Collapse -

- There is not a/are not clearly marked drop-off point(s).



1



2



3



4



5



6

Outside Access (Hotel Main Entrance)

Collapse -

Entrance

Collapse -

- This information is for the entrance located at the front of the hotel.
- The entrance area/door is clearly signed.
- There is step-free access at this entrance.
- There is not a canopy or recess which provides weather protection at this entrance.
- The entrance door(s) does not/do not contrast visually with its immediate surroundings.
- The main door(s) open(s) automatically.
- The door(s) is/are double width.
- The width of the door opening is 160cm.
- There is a slope with a very easy incline.



1



2



3



4

Step(s) (Hotel Main Entrance)

Collapse -

- There is a/are step(s) located to the left as you enter the hotel, leading to the hotel reception lobby.
- The step(s) is/are used to access the main hotel.
- There is/are 9 step(s).
- The step(s) is/are clearly marked.
- The height of the step(s) is/are between 15cm and 18cm.
- The going of the step(s) is/are between 30cm and 45cm.
- There is a/are handrail(s) at the step(s).
- The handrail(s) is/are on both sides.
- Handrails are at the recommended height (90cm-100cm).
- Handrails do cover the flight of stairs throughout its length.
- Handrails are easy to grip.
- Handrails do extend horizontally beyond the first and last steps.
- The lighting levels at the step(s) are good.



1



2

Lift (Hotel Main Entrance)

Collapse -

- There is a lift for public use.
- The lift is located to the left as you enter the hotel, leading to the hotel reception lobby.
- The lift is clearly visible from the entrance.
- The lift is approximately 5m (5yd 1ft) from the hotel main entrance.
- The lift is a stair lift.
- A member of staff needs to be notified for use of the lift.
- A member of staff is required to operate the lift.
- The platform lift accesses a small level change.
- Clear signs indicating the facilities on each floor are not provided on lift lobby landings.
- There is a clear level manoeuvring space of 150cm x 150cm in front of the lift.
- The dimensions of the lift are 82cm x 95cm (2ft 8in x 3ft 1in).
- The controls for the lift are within 90cm - 120cm from the floor.
- There is not a hearing loop system.
- The lift does not have Braille markings.
- The lift does not have tactile markings.
- The lighting levels in the lift are good.

Comments

Collapse -

- There is a call bell at the top of the steps to gain assistance.
- The height of the bell is 129cm.



1



2



3

Outside Access (Blue Badge Car Park Entrance)

Collapse -

Entrance

Collapse -

- This information is for the entrance located at the front of the hotel, to the left of the hotel main entrance.
- The entrance area/door is not clearly signed.
- There is ramped/sloped access at this entrance.
- There is not a canopy or recess which provides weather protection at this entrance.
- The entrance door(s) does not/do not contrast visually with its immediate surroundings.
- The bell/buzzer is in a suitable position to allow wheelchair users to gain access.
- The height of the bell/buzzer is 94cm (3ft 1in).
- The main door(s) open(s) towards you (pull).
- The door(s) is/are double width.
- The door(s) is/are heavy.
- The width of the door opening is 148cm.

Ramp/Slope

Collapse -

- The ramp/slope is located on the path leading to the entrance.
- The gradient of the ramp/slope is slight.
- The width of the ramp/slope is 121cm (3ft 12in).



1



2



3



4



5

Entrance (Hotel Lobby Internal Entrance)

Collapse -

Entrance

Collapse -

- This information is for the entrance located to the left as you enter either of the hotel entrances.
- The entrance area/door is not clearly signed.
- There is step-free access at this entrance.
- The entrance door(s) does not/do not contrast visually with its immediate surroundings.
- The main door(s) open(s) automatically.
- The door(s) is/are double width.
- The width of the door opening is 158cm.



1

Reception

Collapse -

Reception

Collapse -

- The reception point is located ahead as you enter the hotel lobby internal entrance.
- The reception point is approximately 6m (6yd 1ft) from the hotel lobby internal entrance.
- The reception area/desk is clearly visible from the entrance.
- There is step-free access to the reception point.
- There is a clear unobstructed route to the reception point.
- There are no windows, TVs, glazed screens or mirrors behind the reception point which could adversely affect the ability of someone to lip read.
- The reception counter is not placed in front of a background which is patterned.
- The lighting levels at the reception point are good.
- The height of the reception counter is high (110cm+).
- There is sufficient space to write or sign documents on the counter.
- There is not a lowered section of the counter.
- The counter is staffed.
- Clipboards can be provided to anyone who is unable to use the desk.

- There is a hearing assistance system at the reception point.
- The type of system is a portable loop.
- The hearing system is available only on request.
- The hearing assistance system is signed.
- Staff are trained to use the system.
- Signs and universally accepted symbols or pictograms, indicating lifts, stairs, WCs, circulation routes and other parts of the building are provided in the reception area.
- The type of flooring in the reception area is carpet.

Reception Waiting Area

Collapse -

- There is a waiting area close to the reception point.
- Access to the waiting area is unobstructed.
- There is a mixture of seating with and without armrests.
- There is sufficient space for a wheelchair user to use the waiting area.



1



2



3



4

Getting Around

Collapse -

Access

Collapse -

- There is step-free access throughout the majority of the building, via lift.

Circulation

Collapse -

- There are doors in corridors/walkways which have to be opened manually.
- The type of flooring in corridors/walkways is carpet, tiles and laminate.
- There is some flooring in corridors/walkways which includes patterns or colours which could be confusing or look like steps or holes to some people.
- There is some flooring in corridors/walkways which is shiny and could cause issues with glare or look slippery to some people.
- There is good colour contrast between the walls and floor in the majority of corridors/walkways.
- The lighting levels are good.
- Access to other floors/levels is via stairs and lift.

Signage

Collapse -

- Wayfinding signage is provided.
- The colour, design and typeface of signs is consistent throughout the building.

Audio

Collapse -

- This venue does play background music in public areas.
- Music is played in reception, the bar and restaurant areas.
- There is a hearing assistance system in the public areas of the building.
- The system is a portable loop.

- There is a portable hearing loop available from the reception desk that can be used in all areas of the hotel.
- The hearing assistance system is available only on request.



1



2



3



4

Step(s) (Rear Corridor Steps)

Collapse -

- There is a/are step(s) located on the ground, first and second floors, in the corridor leading to the rear left of the hotel.
- The step(s) is/are used to access Rooms 47-61 on the ground floor, Rooms 147-161 on the first floor and Rooms 231-245 on the second floor.
- There is/are 8 step(s).
- The step(s) is/are clearly marked.
- The height of the step(s) is/are between 15cm and 18cm.
- The going of the step(s) is/are not between 30cm and 45cm.
- There is a/are handrail(s) at the step(s).
- The handrail(s) is/are on both sides.
- Handrails are at the recommended height (90cm-100cm).
- Handrails do cover the flight of stairs throughout its length.
- Handrails are easy to grip.
- Handrails do not extend horizontally beyond the first and last steps.
- The lighting levels at the step(s) are good.



1



2

Eating and Drinking (Hotel Bar)

Collapse -

- The following information is for the bar.
- The bar is located on the ground floor, to the left of the reception lobby.
- There is step-free access to the bar.
- Full table service is not available.
- Food and/or drinks are ordered from the service counter.
- Food and/or drinks can be brought to the table.
- The height of the service counter is high (110cm+).
- There is not a lowered section of the counter.
- There is a hearing assistance system.
- The system is a portable loop.
- The hearing assistance system is signed.
- Staff are trained to use the system.
- There is step-free access within the bar.
- There is ample room for a wheelchair user to manoeuvre.
- This area does play background music.
- The type of flooring in this area is carpet and tiles.
- No tables are permanently fixed.

- No chairs are permanently fixed.
- Some chairs have armrests on both sides.
- The nearest table is approximately 2m from the entrance/opening.
- The nearest table is approximately 2m from the till/counter.
- The standard height for tables is 66cm.
- Plastic/takeaway cups are available.
- Plastic/takeaway cutlery is not available.
- Drinking straws are available.
- There are hand held menus and wall menus available.
- Menus are not available in Braille.
- Menus are not available in large print.
- Picture menus are not available.
- Menus are clearly written.
- Menus are presented in contrasting colours.
- The type of food served here is hot and cold meals and snacks.
- The lighting levels are good.



1



2



3



4



5



6

Eating and Drinking (Traders Restaurant)

Collapse -

- The following information is for the restaurant.
- The restaurant is located on the ground floor, to the left of the reception lobby.
- There is step-free access to the restaurant.
- Full table service is available.
- There is a hearing assistance system.
- The system is a portable loop.
- The hearing assistance system is signed.
- Staff are trained to use the system.
- There is step-free access within the restaurant.
- There is ample room for a wheelchair user to manoeuvre.
- This area does play background music.
- The type of flooring in this area is laminate.
- No tables are permanently fixed.
- No chairs are permanently fixed.
- Some chairs have armrests on both sides.
- The nearest table is approximately 3m from the entrance/opening.
- The distance between the floor and the lowest table is 65cm.
- The distance between the floor and the highest table is 71cm.
- Plastic/takeaway cups are available.
- Plastic/takeaway cutlery is not available.
- Drinking straws are available.

- There are hand held menus available.
- Menus are not available in Braille.
- Menus are not available in large print.
- Picture menus are not available.
- Menus are clearly written.
- Menus are presented in contrasting colours.
- The type of food served here is hot and cold meals and snacks.
- The lighting levels are good.
- Access to the additional seating area is via a steep ramp with no handrails or 2 medium height steps with handrails on both sides.



1



2



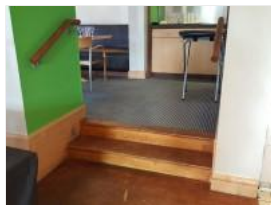
3



4



5



6

Accessible Room(s) (Rooms 003 and 007)

Collapse -

Accessible Room Information

Collapse -

- The details in this section relates to the accessible room(s) with a wet room/wheel in shower.
- This type of accessible room is located on the ground floor.
- There is step-free access to this type of accessible room.
- All accessible rooms of this type have similar specifications.
- Guests need to open a door between the lift and the room(s).
- The narrowest width of the corridor leading to the room surveyed was 142cm.

Bedroom Features

Collapse -

- The accessible room surveyed is located on the ground floor, along the corridor to the right hand side of the hotel.
- The accessible room surveyed at the time of the visit was Room 007.
- There is step-free access to the accessible room surveyed, via lift.
- There is numbered signage on or near the accessible room door.
- The door is manual with a key card lock.
- The fob/card reader height is 112cm.
- The width of the door is 87cm (2ft 10in).
- There are lowered spy holes available.
- The bed type is single.
- The bed height is not adjustable.
- The height of the bed is 58cm (1ft 11in).
- The measurement between the bed base and floor is 12cm (5in).
- The bed is moveable.
- The room does have an unobstructed minimum turning space of 150cm x 150cm next to the bed.
- The height of the desk is 76cm.
- The desk is not height adjustable.

- The desk knee recess has the recommended dimensions of 70cm (height) x 50cm (depth).
- The room surveyed had a height adjustable chair with armrests and an armchair.
- Wardrobes have not been adapted to allow use from a seated position.
- Light switches are between 75cm and 120cm (4ft) from floor level.
- Electric sockets are between 40cm and 100cm (4ft) from floor level.
- The window control type(s) for the room is a/are extended lever(s).
- There is an emergency alarm in the room.
- The emergency pull cord alarm is within reach and fully functional.
- The emergency alarm rings to reception.
- There is a flashing fire alarm beacon within the room.
- The type of flooring is carpet.

Ensuite Facilities

Collapse -

- The ensuite door opens outwards.
- The door weight is light.
- The door is locked by a twist lock.
- The width of the door to the ensuite is 85cm (2ft 9in).
- The dimensions of the ensuite are 273cm x 325cm (8ft 11in x 10ft 8in).
- The ensuite does have an unobstructed minimum turning space of 150cm x 150cm in front of the toilet seat.
- The ensuite has a non-slip floor.
- There is an emergency alarm within the ensuite.
- The emergency pull cord alarm is within reach and fully functional.
- The emergency alarm rings to reception.
- There is a flashing fire alarm beacon within the ensuite.
- Disposal facilities are available.
- There is a/are open waste paper bin disposal units.
- There is a mirror.
- The mirror is not placed at a lower level or at an angle for ease of use.
- There is a shelf immediately next to or behind the toilet.
- The shelf is not between 90cm and 100cm.
- There is a wash basin.
- The wash basin cannot be reached from seated on the toilet.
- The wash basin is placed higher than 74cm (2ft 5in).
- The height of the wash basin is 89cm.
- There is a vertical wall-mounted grab rail on the left hand side of the wash basin.
- The tap type is lever.
- There is a mixer tap.
- There is not a soap dispenser.

Toilet Details

Collapse -

- The height of the toilet seat above floor level is 48cm (1ft 7in).
- The toilet has a covered cistern.
- There is a lateral transfer space.
- As you face the toilet pan the transfer space is on the left.
- The lateral transfer space is 170cm (5ft 7in).
- There is a flush on the transfer side.
- There is a spatula type lever flush.
- There is a dropdown rail on the transfer side.
- There is a/are wall-mounted grab rail(s) available.
- As you face the toilet, the wall mounted grab rails are on the right.
- There is not a vertical wall-mounted grab rail on the transfer side.
- There is a horizontal wall-mounted grab rail on the opposite side of the seat to the transfer space.

- There is a toilet roll holder.
- The toilet roll holder can be reached from seated on the toilet.
- The toilet roll holder is not placed higher than 100cm (3ft 3in).
- The height of the toilet roll holder is 61cm (2ft).

Shower Details

Collapse -

- The ensuite has a wheel in shower.
- The shower head is height adjustable.
- The shower control type is lever.
- A shower chair is available.
- The height of the flip-down/tip-up or fixed seat is 45cm (1ft 6in).
- There is a/are wall-mounted grab rail(s) available for the shower.
- There are not horizontal and/or dropdown rails available on both sides of the shower seat.
- There is a single vertical grab rail to assist standing users.

Colour Contrast and Lighting

Collapse -

- The colour contrast between the external hotel room door and wall is poor.
- The colour contrast between the internal hotel room door and wall is fair.
- The colour contrast between the hotel room walls and floor is good.
- The colour contrast between the external ensuite door and wall is fair.
- The colour contrast between the internal ensuite door and wall is poor.
- The colour contrast between the ensuite walls and floor is fair.
- The colour contrast between the drop down rail(s) and wall is good.
- The colour contrast between the wall-mounted grab rail(s) and wall is good.
- The toilet seat colour contrast is poor.
- The lighting levels in the room are low.
- The lighting levels in the ensuite are good.



1



2



3



4



5



6



7



8

Standard Room(s) (Room 036)

Collapse -

Bedroom Features

Collapse -

- The room surveyed is located on the ground floor, to the rear left of the hotel.
- The room surveyed at the time of the visit was Room 036.
- There is step-free access to the room surveyed.
- There is numbered signage on or near the room door.

- The width of the door is 76cm (2ft 6in).
- The bed type is single.
- The height of the bed is 61cm (2ft).
- The measurement between the bed base and floor is 12cm (5in).
- Light switches are not within 120cm (3ft 11in) from floor level.
- There is not an emergency alarm in the room.
- There is not a flashing fire alarm beacon within the room.
- The type of facilities within the ensuite include; a toilet, a wash basin and a shower.
- The ensuite door opens inwards.
- The width of the door to the ensuite is 63cm (2ft 1in).
- There is not an emergency alarm within the ensuite.
- There is not a flashing fire alarm beacon within the ensuite.
- The tap type is lever.
- There is a mixer tap.

Colour Contrast and Lighting

Collapse -

- The colour contrast between the external hotel room door and wall is poor.
- The colour contrast between the internal hotel room door and wall is fair.
- The colour contrast between the hotel room walls and floor is good.
- The colour contrast between the external ensuite door and wall is good.
- The colour contrast between the internal ensuite door and wall is poor.
- The colour contrast between the walls and floor in the ensuite is good.
- The lighting levels in the room are low.
- The lighting levels in the ensuite are good.

Comments

Collapse -

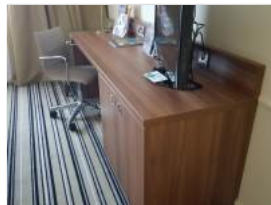
- There is a deep step to access the shower.



1



2



3



4



5



6



7



8



9

Other Floors

Collapse -

Stairs

Collapse -

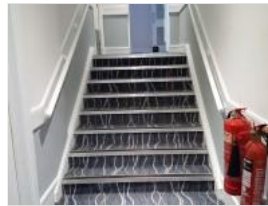
- Stairs can be used to access other floors.
- The stairs are for public use.
- The stairs are located along the corridor to the right hand side of the building.
- The stairs are approximately 25m from the hotel lobby internal entrance.
- Signs indicating the location of the stairs are not available from the entrance.
- There are manual, heavy, single doors to enter and exit the stairwell on all floors.
- The floors which are accessible by stairs are G, 1 and 2.
- There are 15+ steps between floors.
- The height of the step(s) is/are 19cm.
- The going of the step(s) is/are not between the recommended 30cm and 45cm.
- The steps are clearly marked.
- There is a/are handrail(s) at the step(s).
- The steps have a handrail on both sides.
- Handrails are at the recommended height (90cm-100cm).
- Handrails do cover the flight of stairs throughout its length.
- Handrails are easy to grip.
- Handrails do not extend horizontally beyond the first and last steps.
- There is a landing.
- Clear signs indicating the facilities on each floor are not provided on landings.
- The lighting levels at the steps are good.



1



2



3



4

Lift

Collapse -

- There is a lift for public use.
- The lift is located along the corridor to the right hand side of the building.
- Signs indicating the location of the lift are clearly visible from the entrance.
- The lift is approximately 26m (28yd 1ft) from the hotel lobby internal entrance.
- The lift is a standard lift.
- A member of staff does not need to be notified for use of the lift.
- The floors which are accessible by this lift are G, 1 and 2.
- Clear signs indicating the facilities on each floor are provided on lift lobby landings.
- There is a clear level manoeuvring space of 150cm x 150cm in front of the lift.
- Lift doors do not contrast visually with lift lobby walls.
- The external controls for the lift are not within 90cm - 110cm from the floor.
- The colour contrast between the external lift controls and the control plate is poor.
- The colour contrast between the external lift control plate and the wall is poor.
- The clear door width is 79cm (2ft 7in).
- The dimensions of the lift are 120cm x 114cm (3ft 11in x 3ft 9in).
- There are no separate entry and exit doors in the lift.
- There is a mirror to aid reversing out of the lift.
- There is a list of floor services available within the lift.
- The lift does have a visual floor indicator.
- The lift does not have an audible announcer.
- The controls for the lift are within 90cm - 120cm from the floor.

- There is not a hearing loop system.
- The lift does not have Braille markings.
- The lift does have tactile markings.
- The lighting levels in the lift are good.
- There is a/are similar lift(s) available.



1



2



3

Standard Room(s) (Executive Room 243)

Collapse -

Bedroom Features

Collapse -

- The room surveyed is located on the second floor, to the rear left of the hotel.
- The room surveyed at the time of the visit was Room 243.
- There is stepped access to the room surveyed.
- There is numbered signage on or near the room door.
- The width of the door is 77cm (2ft 6in).
- The bed type is double.
- The height of the bed is 56cm (1ft 10in).
- The measurement between the bed base and floor is 14cm (6in).
- Light switches are not within 120cm (3ft 11in) from floor level.
- There is not an emergency alarm in the room.
- There is not a flashing fire alarm beacon within the room.
- The type of facilities within the ensuite include; a toilet, a wash basin, a bath and a shower.
- The ensuite door opens inwards.
- The width of the door to the ensuite is 68cm (2ft 3in).
- There is not an emergency alarm within the ensuite.
- There is not a flashing fire alarm beacon within the ensuite.
- The tap type is lever.
- There is a mixer tap.
- Wall-mounted grab rails are available for the bath.

Colour Contrast and Lighting

Collapse -

- The colour contrast between the external hotel room door and wall is poor.
- The colour contrast between the internal hotel room door and wall is good.
- The colour contrast between the hotel room walls and floor is good.
- The colour contrast between the external ensuite door and wall is good.
- The colour contrast between the internal ensuite door and wall is poor.
- The colour contrast between the walls and floor in the ensuite is good.
- The colour contrast between the grab rails and wall is good.
- The lighting levels in the room are low.
- The lighting levels in the ensuite are good.



1



2



3



4



5



6



7



8



9

Accessible Toilet(s)

Collapse -

- There is an/are accessible toilet(s) for public use.

Location and Access

Collapse -

- The accessible toilet surveyed is not for the sole use of disabled people.
- This accessible toilet is located on the ground floor, along the corridor to the rear right of the reception lobby.
- This accessible toilet is approximately 17m (18yd 1ft) from the hotel lobby internal entrance.
- There is step-free access to the accessible toilet.

Features and Dimensions

Collapse -

- This is a shared toilet.
- A key is not required for the accessible toilet.
- There is tactile and pictorial signage on or near the toilet door.
- The door opens outwards.
- The door is heavy.
- The door is locked by a lever twist.
- The width of the accessible toilet door is 96cm (3ft 2in).
- The dimensions of the accessible toilet are 166cm x 195cm (5ft 5in x 6ft 5in).
- The accessible toilet does not have an unobstructed minimum turning space of 150cm x 150cm.
- The toilet has not got a non-slip floor.
- There is a lateral transfer space.
- As you face the toilet pan the transfer space is on the right.
- The lateral transfer space is 101cm (3ft 4in).
- There is a flush on the transfer side.
- There is a spatula type lever flush.
- There is a dropdown rail on the transfer side.
- There is an emergency alarm.
- The emergency pull cord alarm is fully functional.
- There is not a flashing fire alarm beacon within the toilet.